

## MISSION STATEMENT

North South Consultants Exchange (NSCE) has been registered as a consultancy firm in Egypt since 1988. It is specialized in all aspects of formulation, implementation and operation of assignments in the field of development cooperation.

NSCE is committed to improving the quality of life and economic welfare of people and communities throughout the Middle East, North and sub-Saharan Africa. NSCE's areas of expertise include four domains, social development, cultural development, environmental management and economic empowerment.

NSCE's concept is built on sound information and empirical analysis to provide the best foundation for decision-making in both the public and private sector.

Its efforts centers on providing a range of professional services to help governmental and international agencies succeed in achieving their public policy and developmental objectives.

NSCE supports its clients with tailored technical assistance, marketing services, and training services.

*"From education to preservation of culture and heritage, from housing to early childhood development, from micro finance and small micro enterprise scale-up business to the appropriate use of natural resources, NSCE addresses pressing issues that affect people's quality of life and meet the needs of marginalized communities in the regional sphere".*



*Conservation of Ancient Quarry Landscapes in the Eastern Mediterranean (2005-2008)/ Fayoum-Egypt/ Funded by the European Commission*

## COMPANY PORTFOLIO

The company has full-time professionals and a pool of associated consultants representing over 20 years of experience in the Middle East and abroad. The firm's portfolio contains short-term studies, special missions, large-scale surveys and long-term technical assistance in project implementation and management. NSCE has specific skills tailored to fit the needs of projects in rural and deprived regions.

## LOCAL AND INTERNATIONAL EXPERIENCE

NSCE has a deep knowledge of the technical, economical, cultural and social conditions in Egypt and the Middle East. A solid understanding of current developmental issues, in addition to multilingual abilities, enables NSCE to offer maximum capacity in the countries in which it operates.

The firm has worked in most areas of Egypt, including: Alexandria, Aswan, Beni Suef, Cairo, Daqahliya, Fayoum, Giza, Ismailia, Marsa Matrouh, North and South Sinai, Kafr El Sheikh, Qena, Sohag, Southern Red Sea and Touthka. NSCE staff also have had assignments in Djibouti, India, Jordan, Kenya, Lebanon, Libya, Somalia, Sudan, Syria, Tunisia, Morocco, Algeria, the United Arab Emirates, Yemen, Mauritania, Iraq, Malawi, and Equatorial Guinea.

## SERVICES

- \* Participatory water resources management
- \* Water and Sanitation
- \* Health
- \* Community participation and development
- \* Integrated rural development
- \* Institutional development
- \* Women in development
- \* Human resources development
- \* Formal and Informal Education
- \* Educational reform
- \* Health education
- \* Vocational Training
- \* NGO Training
- \* Rural infrastructure and housing
- \* Farming systems
- \* Small agribusiness
- \* Marketing
- \* Small and Micro Enterprise
- \* Urban environment upgrading
- \* Eco-tourism development
- \* Rural Tourism
- \* Cultural Heritage preservation
- \* Drinking water and sanitation
- \* Hygiene Promotion
- \* Management Training



*Strengthening the Capacity of Rural Population of Marsa Matrouh to Produce Olive Oil and Herbs (2005-2009)/ Egypt/ EU Food Aid Counterpart Fund*



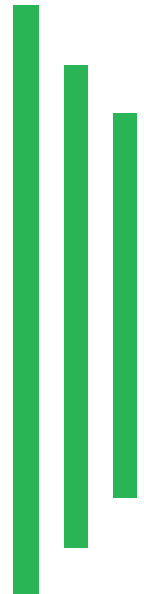
*Preparatory Activities Component in Integrated Irrigation Improvement & Management Project (PAC IIIMP)/ 1999-2006/ Egypt/ The Royal Netherlands Embassy*

## SPECIFIC SKILLS

- \* Participatory needs assessment
- \* Project implementation, monitoring and evaluation
- \* Environmental impact assessment
- \* Feasibility Studies
- \* Negotiation with donor organizations and government officials
- \* Gender analysis
- \* Design and implementation of training programs
- \* Participatory rapid appraisal
- \* Training needs assessment
- \* Planning and implementation of comprehensive surveys, statistical analyses and baseline studies
- \* Impact assessment
- \* Participatory planning process
- \* Design and implementation of computer information systems planning and implementation of comprehensive surveys, statistical analyses and studies
- \* Project identification, formulation and proposal
- \* Design and implementation of computer information systems

## COMPANY STRUCTURE

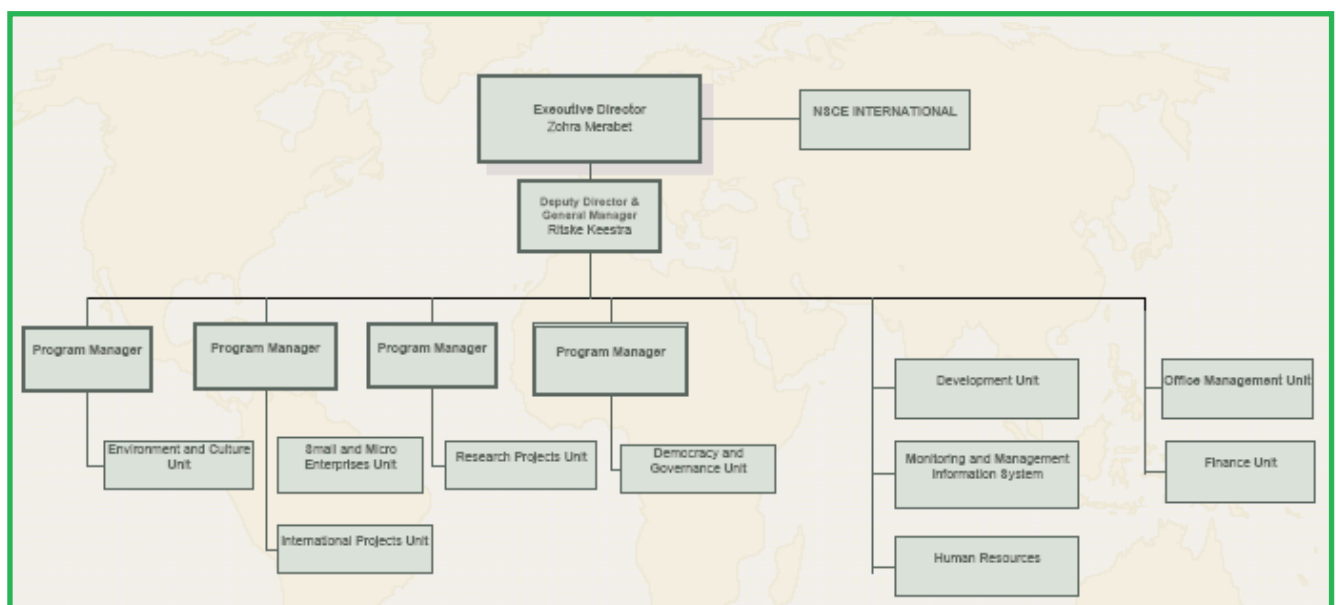
| Staff Unit  | Managerial Staff | Permanent Staff | Contractual Staff |
|---|------------------|-----------------|-------------------|
| General Management  | 2                | 2               | 2                 |
| Development Division (Business and Product Development Units) | 1                | 2               | 1                 |
| Management Information System Unit                            | 1                | 1               | 2                 |
| Human Resources Unit  | 1                | 1               | 1                 |
| Office Management Unit  | 1                | 8               | 9                 |
| Programs: Environmental & Cultural Unit                       | 2                | 4               | 20                |
| Programs: Small & Micro Enterprise Unit                       | 2                | 9               | 11                |
| Programs: Research Unit                                       | 1                | 2               | 9                 |
| Programs: International Projects Unit                         | 2                | 2               | 9                 |
| Programs: Governance and Social Protection                    | 1                | 0               | 0                 |
| <b>TOTAL</b>  | <b>14</b>        | <b>29</b>       | <b>55</b>         |



## LOGISTICS MANAGEMENT

To handle the amount of work involved in the project and ensure an adequate quality of the results and deliverables, a standardized management system has been designed and implemented. Common procedures are outlined for all project's activities, including field visits. This management system follows the Project Cycle Management and Logical framework approach to secure the quality and the time delivery of the study output. Prior to the start up of the field visits, a team building session is carried out to introduce the members of the team to the project content, working and communication procedures, monitoring tools, reporting formats and job descriptions and roles within the team.

## ORGANIZATIONAL STRUCTURE



## NSCE CLIENTS

### International Organizations

HABITAT - - European Union - - African Development Bank (ADB) - - DFID - - UNESCO - - United Nations Development Program - - Food and Agricultural Organization (FAO) - - United Nations Fund for Women (UNIFEM) - - UNICEF - - International Labor Organization (ILO) - - World Bank



*Linking Craft Producers from Marginal Communities to National & International Markets (2003-2006) / Egypt/ COPSE/ Funded by DEPT SWAP*

### Bilateral Organizations

Netherlands Directorate General for Int'l Cooperation (DGIS) - - FINNIDA - - CIDA - - GTZ - - DANIDA - - USAID - - JICA - - KfW

### Non-governmental Organization

World Education International - - International Youth Foundation - - The Ford Foundation - - Catholic Relief Services (CRS) - - Friedrich Ebert Foundation - - CARE International - - ACDI / VOCA - USA - - NOVIB - - COSPE, Italy - - Bernard van Leer Foundation - - Friedrich Naumann Foundation - - Save the Children

### Project Recipients and Counterparts in Egypt

Ministry of Social Affairs - - Ministry of International Cooperation - - Ministry of Health - - Ministry of Agriculture and Land Reclamation - - Governorates - - Agricultural Cooperatives - - Community Development Associations - - Supreme Council of Antiquities - - Principal Bank for Development of Agricultural Credit - - Tourism Development Authority - - Fayoum Egyptian Authority of Water Supply & Sanitation (FEGAWS) - - Egyptian Public Authority for Drainage Projects (EPADP) - - Ministry of Water Resources and Irrigation (MWRI) - - Ministry of Environment - - Egyptian Environmental Affairs Agency

### International Firms

Arcadis Euroconsult, The Netherlands - - AHT Group, Germany - - VAKAKIS International, Greece - - Euronet Consulting, Belgium - - PA Consulting, USA - - Management Development Foundation - - The Netherlands - - Plancenter Ltd., Finland - - Skytae Consulting LLC, Finland - - Agriconsulting, Italy - - Enterplan Limited, UK - - Royal Haskoning, The Netherlands

## OUR SISTER COMPANY

NSCE International was established mid 2002, as a sister company to NSCE Egypt, and is registered in England. The main aim of forming a new company was to strengthen NSCE capacity for international networking and thereby broaden the range of specialists, clients and countries of operation. NSCE International has an excellent network of associated experts in the fields of conflict analysis, peace building and rehabilitation in post-conflict zones.



*Governorate Capacity Building Project (2004-2006) / Iraq/ DFID*